

QL2 Business Insights for Air



QL2 Business Insights for Air provides graphic representations of the data you need to compete in today's dynamic marketplace. With a complete picture of the competitive landscape, you can fine

tune your revenue management and pricing strategies as well as tactics, and react to the market faster than ever.

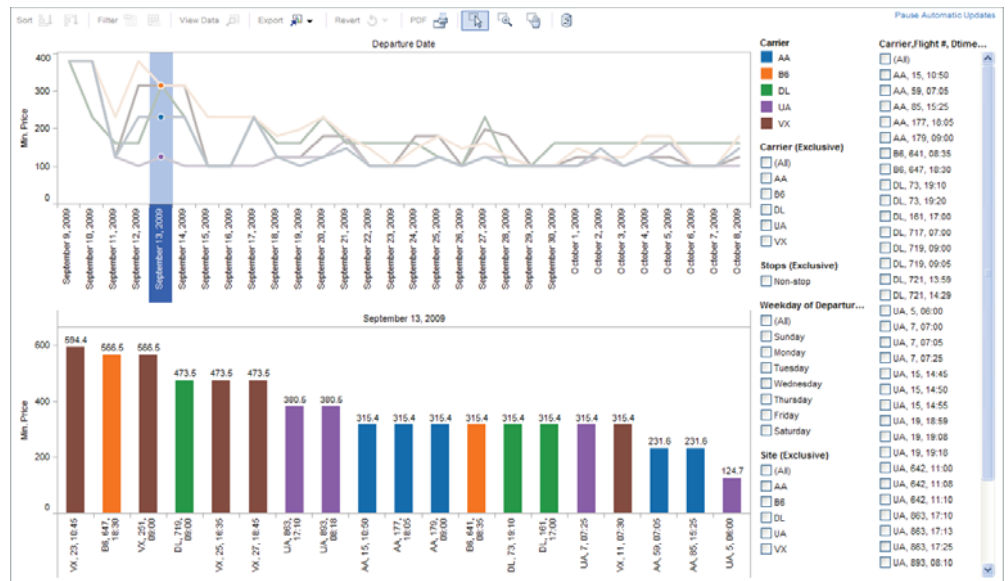
Designed to display the data most important to pricing analysts and revenue managers, QL2 Business Insights for Air enables you to position your organization as the leader in the industry by highlighting key trends in the market. Gone are the days when organizations had to use their internal IT department to build custom reporting tools. You are now able to view the competitive pricing landscape with easy-to-use visual reports.

Extend the value of QL2 Data Access for Air with QL2 Business Insights for Air

Visualize Vast Amounts of Data and Drill Down to Details with the Click of a Mouse

QL2 Business Insights for Air works with QL2 Data Access for Air to provide you with a robust set of interactive reporting tools, giving you a 360-degree view of the market.

With QL2 Business Insights for Air, you have access to engaging visual reports that display summary information as well as detailed fare data. You see how your organization stacks up against your competitors, how to better manage your inventory, what markets may be under performing, and where your company stands in the marketplace.



Fares By Departure Date via QL2 Business Insights for Air



QL2 Business Insights for Air Gives You Visibility and Control

QL2 Business Insights for Air pinpoints and highlights fares and times of interest to your organization in a compelling interactive format, making it easier to adjust to the market. You control the data displayed and can drill down to the specific days of the week and times most important to your organization. QL2 also stores the data used to generate your reports in a database accessible format for future use.

- **Easy-to-use:** Connect to QL2 Business Insights for Air via any web browser.
- **User-controlled:** Filter to view only the information critical to your goals.
- **On Demand:** Visualize fare data as often as needed.
- **Robust:** Access visual reports for pricing data for any number of carrier or online travel agency sites.
- **Dynamic:** Take advantage of continuous access to critical information as QL2 Business Insights for Air quickly adapts to website changes.

Optimize Your Success with QL2

Learn more about how QL2 can help you access the vital data you need to gain and hold a competitive advantage and discover new market opportunities. See for yourself how easy it is to access and visualize the data you need to optimize your success. Start today and join the hundreds of organizations around the world that rely on QL2 for manageable data on demand.

Request a Free Demonstration

Let us show you how QL2 Business Insights for Air can optimize your success. Contact us today.

Email sales@QL2.com.



| Carrier Heat Map | | | | | |
|-------------------|---------|-------|-------|-------|-------|
| Month, Day, Yea.. | carrier | | | | |
| | AA | B6 | DL | UA | VX |
| July 27, 2009 | 444.6 | 380.5 | 380.5 | 430.7 | 380.5 |
| July 28, 2009 | 380.5 | 427.0 | 380.5 | 380.5 | 380.5 |
| July 29, 2009 | 347.0 | 315.4 | 315.4 | 380.5 | 380.5 |
| July 30, 2009 | 402.8 | 315.4 | 315.4 | 315.4 | 473.5 |
| July 31, 2009 | 379.5 | 315.4 | 315.4 | 473.5 | 473.5 |
| August 1, 2009 | 379.5 | 315.4 | 315.4 | 380.5 | 473.5 |
| August 2, 2009 | 438.1 | 315.4 | 315.4 | 370.2 | 473.5 |
| August 3, 2009 | 295.8 | 315.4 | 315.4 | 370.2 | 473.5 |
| August 4, 2009 | 268.8 | 268.8 | 365.6 | 365.6 | 473.5 |
| August 5, 2009 | 268.8 | 315.4 | 365.6 | 315.4 | 380.5 |
| August 6, 2009 | 268.8 | 315.4 | 315.4 | 380.5 | 380.5 |
| August 7, 2009 | 268.8 | 268.8 | 315.4 | 380.5 | 380.5 |
| August 8, 2009 | 268.8 | 315.4 | 315.4 | 315.4 | 199.1 |
| August 9, 2009 | 268.8 | 315.4 | 315.4 | 333.0 | 161.9 |
| August 10, 2009 | 295.8 | 268.8 | 268.8 | 315.4 | 129.3 |
| August 11, 2009 | 268.8 | 231.6 | 268.8 | 231.6 | 120.0 |
| August 12, 2009 | 268.8 | 231.6 | 231.6 | 231.6 | 120.0 |
| August 13, 2009 | 250.2 | 231.6 | 231.6 | 231.6 | 129.3 |
| August 14, 2009 | 268.8 | 268.8 | 231.6 | 315.4 | 161.9 |
| August 15, 2009 | 304.2 | 315.4 | 231.6 | 315.4 | 161.9 |
| August 16, 2009 | 268.8 | 268.8 | 231.6 | 231.6 | 199.1 |
| August 17, 2009 | 199.1 | 231.6 | 161.9 | 231.6 | 161.9 |
| August 18, 2009 | 161.9 | 180.5 | 231.6 | 199.1 | 161.9 |
| August 19, 2009 | 161.9 | 180.5 | | 199.1 | 161.9 |
| August 20, 2009 | 147.9 | 180.5 | 161.9 | 152.6 | 161.9 |
| August 21, 2009 | 147.9 | 199.1 | 147.9 | 199.1 | 161.9 |
| August 22, 2009 | 180.5 | 199.1 | 147.9 | 199.1 | 161.9 |

Carrier Heat Map via QL2 Business Insights for Air